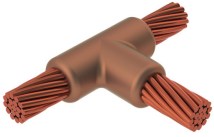
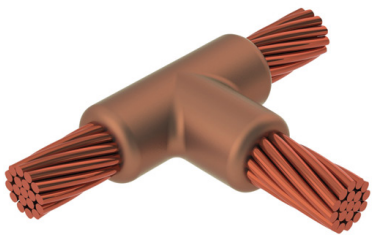


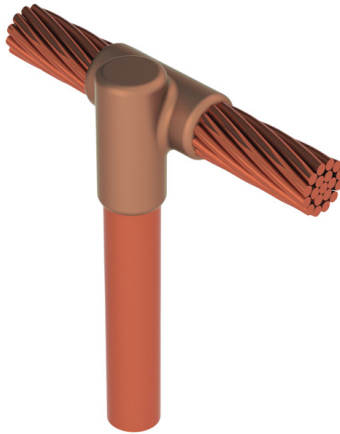
Standard Molds



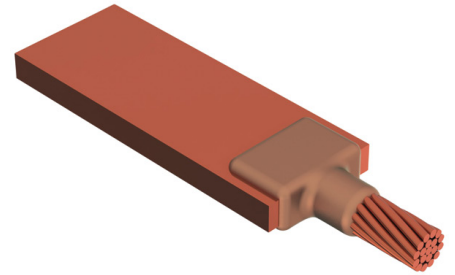
ERICO® CADWELD® graphite molds are designed and engineered for thousands of connection styles.



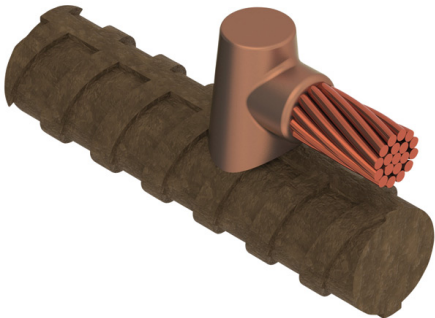
Cable to Cable



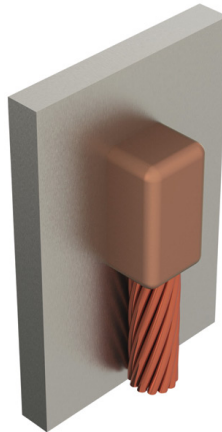
Cable to Ground Rod or Other Rounds



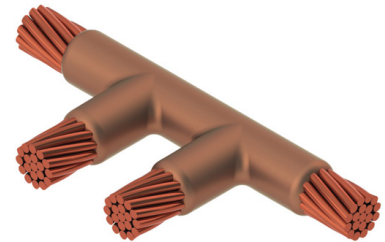
Cable to Lug or Busbar



Cable to Rebar

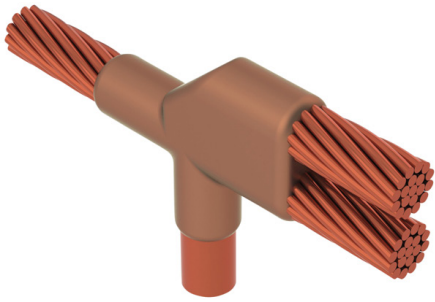


Cable to Steel



Cable to Cable to Cable

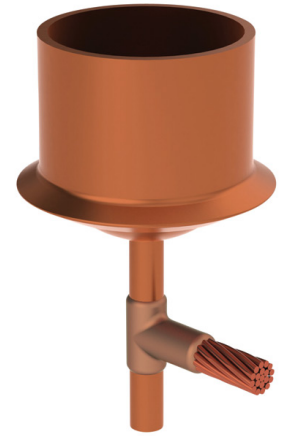




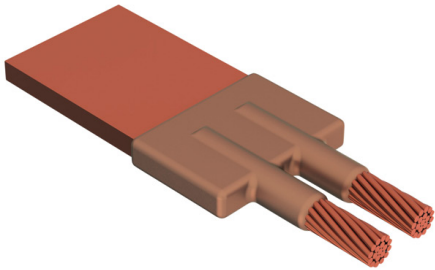
Cable to Cable to Ground Rod or Other Rounds



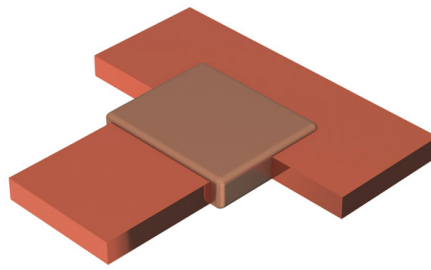
Cable to Ground Rod Splice/ Grounding Receptacle



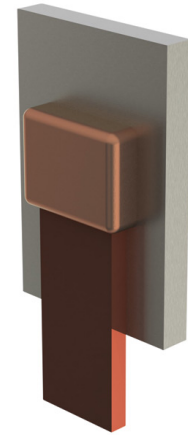
Cable to Ground Receptacle or Ground Plate



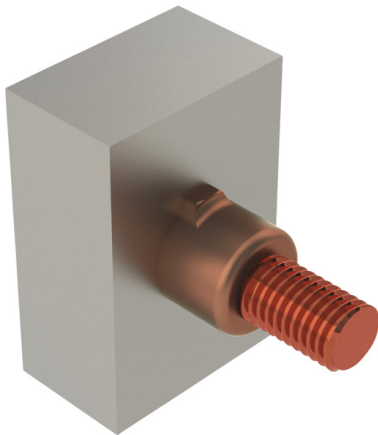
Cable to Cable to Lug or Busbar



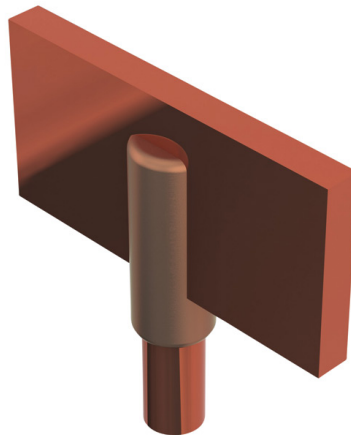
Busbar to Busbar



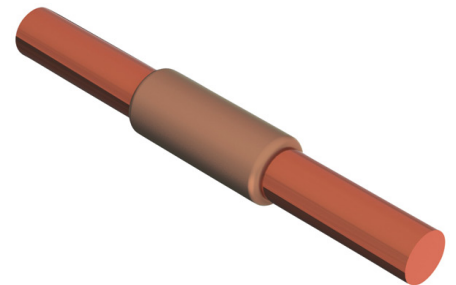
Lug or Busbar to Steel



Copper or Steel Stud to Steel Surface



Ground Rod to Lug or Busbar



Ground Rod Splice/ Grounding Receptacle

WARNING

ERICO products shall be installed and used only as indicated in ERICO's product instruction sheets and training materials. Instruction sheets are available at www.erico.com and from your ERICO customer service representative. Improper installation, misuse, misapplication or other failure to completely follow ERICO's instructions and warnings may cause product malfunction, property damage, serious bodily injury and death.

Copyright © 2015 ERICO International Corporation. All rights reserved.

CADDY, CADWELD, CRITEC, ERICO, ERIFLEX, ERITECH, and LENTON are registered trademarks of ERICO International Corporation.

