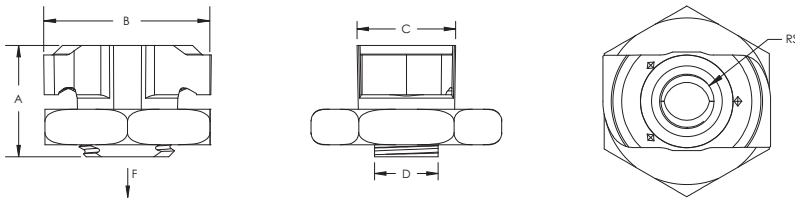


# CADDY ROD LOCK Channel Nut



- Provides fast universal attachment of threaded rod and hardware to standard strut profiles
- Can be used to prefabricate assemblies which can be quickly pushed onto previously installed threaded rods
- Works with slightly damaged threads and minor burrs on the threaded rod



Material: Cast Iron  
Finish: Electrogalvanized

| Part Number | Article Number | Rod Size RS | A     | B     | C       | D       | Static Load F |
|-------------|----------------|-------------|-------|-------|---------|---------|---------------|
| CRLSM8EG    | 390003         | M8          | 23 mm | 35 mm | 19.5 mm | 13.5 mm | 2,750 N       |
| CRLSM10EG   | 390004         | M10         | 23 mm | 35 mm | 19.5 mm | 13.5 mm | 3,750 N       |

For use on plain and electro zinc plated hardware only.

## WARNING

ERICO products shall be installed and used only as indicated in ERICO's product instruction sheets and training materials. Instruction sheets are available at [www.erico.com](http://www.erico.com) and from your ERICO customer service representative. Improper installation, misuse, misapplication or other failure to completely follow ERICO's instructions and warnings may cause product malfunction, property damage, serious bodily injury and death.

Copyright © 2015 ERICO International Corporation. All rights reserved.  
CADDY, CADWELD, CRITEC, ERICO, ERIFLEX, ERITECH, and LENTON are registered trademarks of ERICO International Corporation.

