

CADDY[®]

CAT-CM[™]

Cable Support System



ERICO[®]

This Cat Earned Its Stripes

Beginning with the J-Hook, ERICO® has continued to innovate and develop the complete line of CABLECAT™ products to support today's high-performance cable. And now, the makers of CADDY® Fasteners introduce

a universal cable support system. The new CADDY CAT-CM is a high-performance cable support system that brings you unprecedented installation flexibility. Versatile components result in fast, efficient installations.



U-Hook



Double J-Hook

The CAT-CM system is the answer to virtually any installation challenge.

- When there's a need for horizontal and vertical runs
- When the specs require continuous cable support spacing anywhere from 3 inches to 5 feet
- When the drawings call for hanging from the ceiling, beam, or strut and mounting on the floor

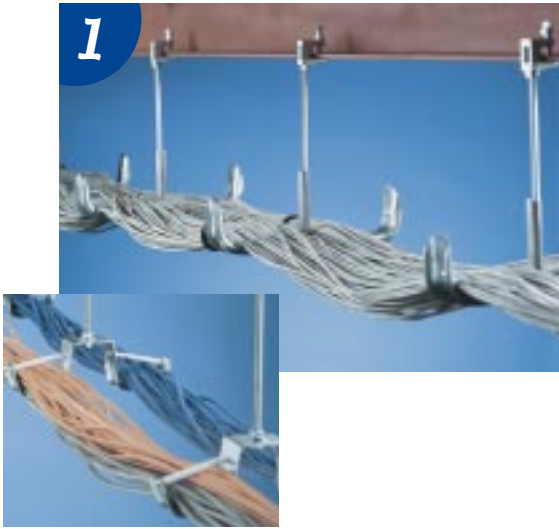
It doesn't matter. The CAT-CM can manage high-performance cable in any application.

The new CADDY CAT-CM cable support system provides a convenient pathway for wires and cables. Specially designed U-Hooks and double J-Hooks have large-diameter, rounded support surfaces/edges to avoid over-bending and kinking of cables. The U-Hooks are available in a range of sizes for different cable capacity needs.

Three Installation Options

The CAT-CM system offers three installation options that can be easily combined – resulting in installation flexibility to meet every need.

1



Rod-Mounted Option

The Rod-Mounted Option allows for field assembly of the hooks onto All-Thread Rod. Benefits include:

- Customized intervals between hooks to comply with the TIA 569 standard as well as ISO/IEC 18010
- Easy level changes - under or over ductwork, piping, etc. - no level change fittings necessary
- Direct attachment to the ceiling or building structure with threaded rod and CADDY Fasteners

2



Cantilever-Mounted Option

The Cantilever-Mounted Option consists of U-Hooks being mounted with brackets to walls and columns. This option allows for:

- Cable runs along walls
- Specification of individual hook spacing as needed
- Mounting of cabling within existing column grid

3



Strut-Mounted Option

The Strut-Mounted Option is accomplished by assembling the hooks to strut for a cost-effective alternative to center rail cable tray and wire basket systems. The Strut-Mounted option:

- Utilizes standard strut which is readily available and provides strength
- Has sheet-metal U-hooks (rungs) with specially designed quick-attach strut fasteners for virtually any half-slot strut
- Allows for customized support spacing
- Has fittings for horizontal and vertical change of direction - simplifying angle and level changes
- Offers optional rollers and retainers on the U-Hooks to retain cables and support cable pulls
- Has protective tubes for the threaded rod to eliminate scraping and cutting of cable sheath during pulling
- U-Hooks to be mounted on a base (e.g., Pipe Pier™ in raised floor applications) allowing for a large amount of cables to be organized and neatly routed

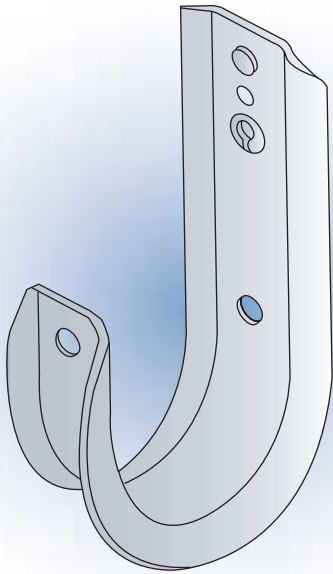
™ Pipe Pier is a trademark of Pipe Pier Inc.

The Evolution of CABLECAT

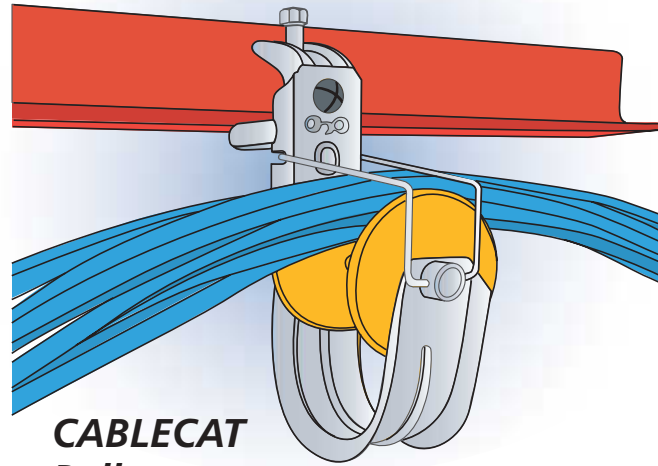
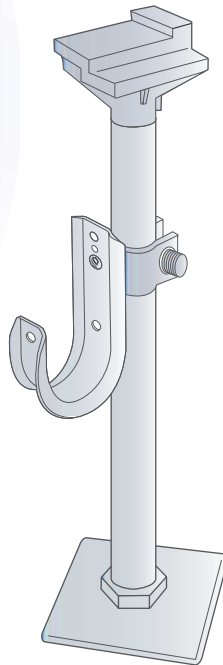
The advent of high-performance cables created the need for wide-base support. ERICO developed the CABLECAT line to meet that need. We combine the wide base with

the efficiency of our innovative installation systems – replacing more rigid and cumbersome methods.

J-Hook for wall, rod, wire, beam, strut, purlin, T-bar and ceiling attachment



Raised Floor Cable Support



CABLECAT Pulley



Installation Options

Strut-Mount Installation



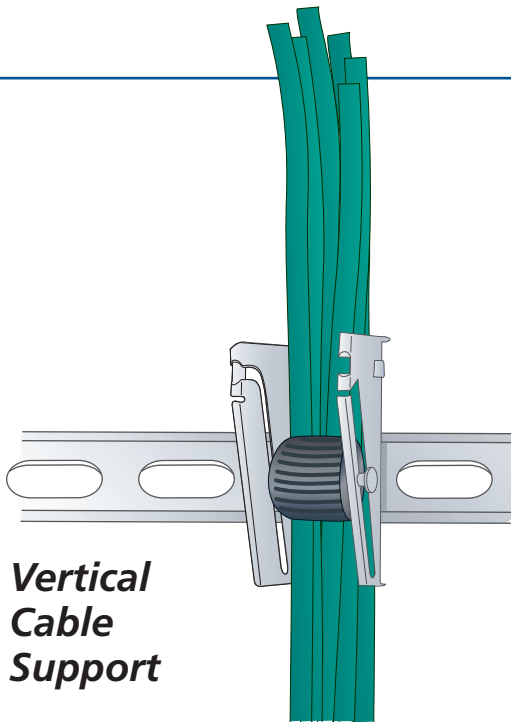
Mount U-Hook or Double J-Hook to strut.



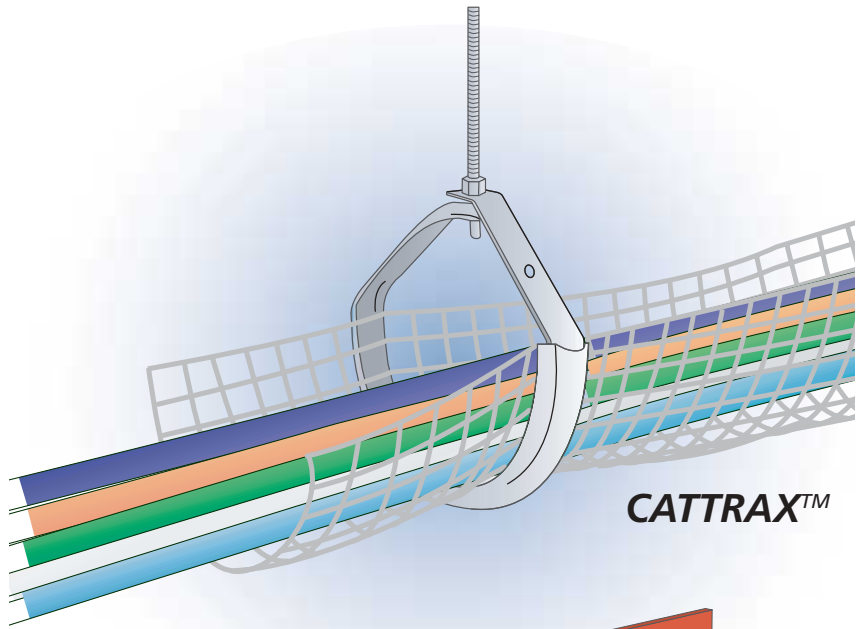
Mount strut to All-Thread Rod.



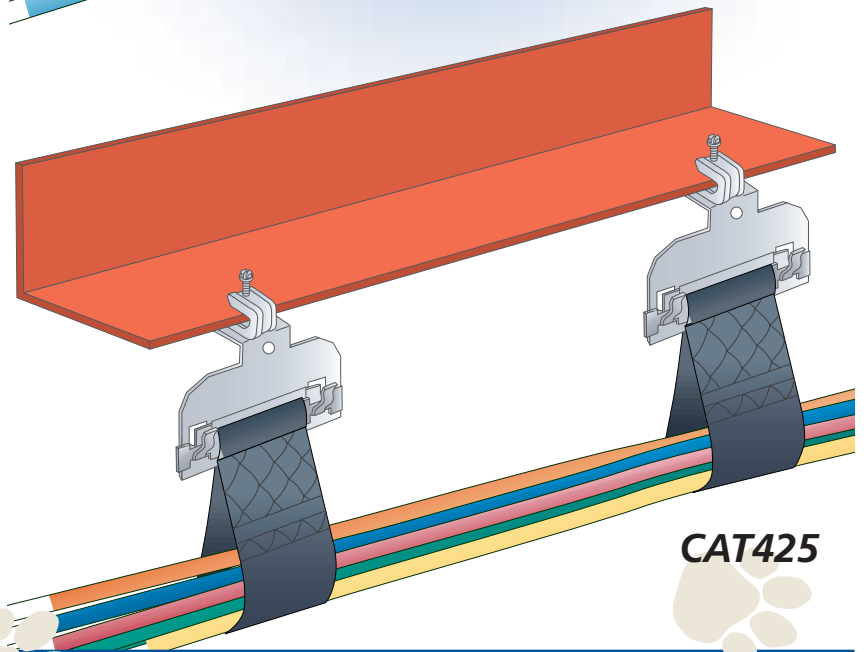
Mount assembly to beam



**Vertical
Cable
Support**



CATTRAX™



CAT425

Rod-Mount Installation

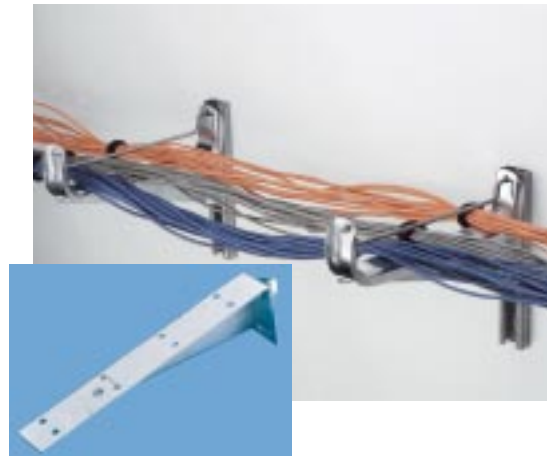


Mount U-Hook or Double J-Hook to All-Thread Rod



Connect the U-Hook or Double J-Hook with All-Thread Rod to beam with a beam clamp

Cantilever Mount Installation

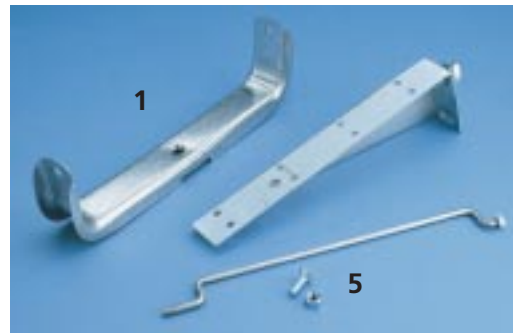


Attach U-Hook onto wall bracket already mounted on wall.

System Components



Strut Mount



Cantilever Mount



Rod Mount

UPC# 782856	Catalog #	Description	Qty per Box/Case	Weight per Box Kg. (Lb.)	Figure#
46498	CAT100CM	Double J-Hook	20/120	3.4 (7.5)	–
46486	CAT200CM	U-Hook 200 mm/8" with T-nut*	10/50	2.7 (6)	1
46489	CAT200MLN	U-Hook 200 mm/8" less nut	10/50	2.3 (5)	1
46485	CAT300CM	U-Hook 300 mm/12" with T-nut*	10/50	3.2 (7)	1
46490	CAT300MLN	U-Hook 300 mm/12" less nut	10/50	2.7 (6)	1
46488	CATLCCM	Level-change swivel bracket	4 in bag 5 bags/box	5.9 (13)	2
46487	CATSLCM	Same-level swivel bracket	2 in bag 10 bags/box	5.9 (13)	3
46493	CATRL200CM	Roller 200 mm/8" (incl. rod & nuts)	10/no case	2.3 (5)	4
46494	CATRL300CM	Roller 300 mm/12" (incl. rod & nuts)	10/no case	3.2 (7)	4
46496	CATRT200CM	Wire Retainer 200 mm/8"	50/no case	3.4 (7.5)	5
46495	CATRT300CM	Wire Retainer 300 mm/12"	50/no case	4.5 (10)	5
46497	CATTBCM	Protection tube	30/no case	1.6 (3.5)	6
46491	CATSPCM	Strut support plate	20/no case	0.9 (2)	7

*Quick-Attach T-nut for HALF SLOT Strut

Cable Capacity Chart

Cable	CAT100CM on strut	CAT100CM on rod	CAT200CM on strut	CAT200CMLN on rod or cantilever	CAT300CM on strut	CAT300CMLN on rod or cantilever
4-pair UTP, Cat 5/5e	50	80	320	500	480	750
4-pair UTP, Cat 6	32	50	200	315	300	470
4-pair ScTP/FTP	24	40	160	250	240	375
4-pair STP	16	26	110	170	160	250



Strut-Mount highlighting rod protection tube, rollers and level change bracket



Double J-Hooks shown attached to standard strut



CAT-CM...

...leading the next generation of cable support systems

ERICO®

www.erico.com



AUSTRALIA

6 Chivers Road
P.O. Box 148
Thornleigh (Sydney) NSW 2120
Australia
Tel. 61-2-9479-8500
Fax 61-2-9484-9188



HONG KONG

Unit 1, 2nd Floor, Block A
Po Yip Building
62-70 Texaco Road
Tsuen Wan, New Territories
Hong Kong
Tel. 852-2764-8808
Fax 852-2764-4486



SINGAPORE

16 Wan Lee Road
Jurong Industrial Estate
Singapore 627946
Tel. 65-6-268-3433
Fax 65-6-268-1389



BELGIUM

Lambreekstraat 5A
B-1831 Diegem
Belgium
Tel. 32-14-69-96-88
Fax 32-14-69-96-90



HUNGARY

Ceglédi út 1-3
1107 Budapest
Hungary
Tel. 36-1-431-3464
Fax 36-1-431-3471



SPAIN

C/ Provenza 288, Pral.
08008 Barcelona
Spain
Tel. 34-93-467-7726
Fax 34-93-467-7725



BRAZIL

R. Dom Pedro Henrique de Orleans
e Braganca, 276
Vila Jaguara, Sao Paulo 05117-000
Brazil
Tel. 55-11-3621-4111
Fax 55-11-3621-4066



INDONESIA

Wisma Danamon Aetna Life, 19th Floor
Jalan Jend. Sudirman Kav. 45-46
Jakarta 12930
Indonesia
Tel. 62-21-575-0941
Fax 62-21-575-0942



SWEDEN

Carlsgatan 12 A
211 20 Malmö
Sweden
Tel. 46-40-611-1360
Fax 46-40-611-9415



CANADA

34600 Solon Raod
Solon, Ohio 44139
U.S.A.
Tel. 1-800-677-9089
Fax 1-800-677-8131



ITALY

Via M. Buonarroti, 15
20090 Cesano Boscone, Milano
Italy
Tel. 39-02-4586-6517
Fax 39-02-4860-0622



SWITZERLAND

Pra Pury 7d
3280 Murten
Switzerland
Tel. 41-26-672-9999
Fax 41-26-672-9988



CHILE

Alcantara 200
Piso 6
Las Condes
Santiago
Tel. 56-2-370-2908
Fax 56-2-370-2914



MEXICO

Av. Melchor Ocampo 193
Piso 13 Torre "A"
11300 Mexico D.F.
Mexico
Tel. 52-5-260-5991
Fax 52-5-260-3310



THAILAND

Level 23, M. Thai Tower, All Seasons Place
87 Wireless Road
Pathumwan, Bangkok 10330
Thailand
Tel. 66-2-627-9037
Fax 66-2-627-9168



DENMARK

Carlsgatan 12 A
211 20 Malmö
Sweden
Tel. 45-46-19-1941
Fax 45-46-19-1942



NETHERLANDS

Postbus 487
NL - 5000 AL Tilburg
Netherlands
Tel. 31-13-583-5400
Fax 31-13-583-5499



TURKEY

Insaat Malzemeleri, Perpa Ticaret Merkezi
B Blok, 5 Ket, 5 Cadde.297
Istanbul 80270
Turkey
Tel. 90-212-210-0825
Fax 90-212-210-0827



FRANCE

Rue Benoit Fourneyron Z.I. Sud
Boite postal 31
42161 Andrezieux Cedex
France
Tel. 33-4-7736-5656
Fax 33-4-7755-3789



NORWAY

Postboks 148
NO-1366 Lysaker
Norway
Tel. 47-67-53-1200
Fax 47-67-12-4268



UNITED KINGDOM

52 Milford Road
Reading, Berkshire RG1 8LJ
United Kingdom
Tel. 44-118-958-8386
Fax 44-118-959-4856



GERMANY

D-66851 Schwanenmuehle
Germany
Tel. 49-6307-918-10
Fax 49-6307-918-150



POLAND

54-613 Wrocław
ul. Krzemieniecka 17
Poland
Tel. 48-71-357-4827
Fax 48-71-342-4099



UNITED STATES

34600 Solon Road
Solon, Ohio 44139
U.S.A.
Tel. 1-440-248-0100
Fax 1-440-248-0723