

**CADDY**<sup>®</sup>

# CADDY<sup>®</sup> ROD LOCK

## Threaded Rod Mounting System

**BUILD**



Assemble on the ground or off-site

**LIFT**



Raise assembly to ceiling

**DONE**



Level, tighten lock nut



**ERICO**<sup>®</sup>

# CADDY® ROD LOCK Threaded Rod Mounting System



The CADDY® ROD LOCK family of products allows contractors to prefabricate complex assemblies at ground level or offsite, and then easily lift and lock them into place by pushing the threaded rod supports into the CADDY ROD LOCK device. This ingenious technology works with threaded rod with burrs or imperfections, helping to eliminate clean-up time or the need to replace damaged threaded rod.

The most unique feature of the system is its breakthrough “push-to-install” design. There is no need to spin the rod or attachment hardware to fix the assembly in place – CADDY ROD LOCK technology simply pushes onto the threaded rod. Fine adjustments are still possible, ensuring a quality installation. Simply speaking – CADDY ROD LOCK is revolutionizing how contractors support conduit, cable tray, lights, ductwork and pipe by helping to make installations faster, easier and more secure.

NEW



PAGES 3-4

## CADDY® ROD LOCK Beam Clamps

Fast, easy solution for attaching threaded rod assemblies to metal beam structures.



PAGE 5

## CADDY® ROD LOCK Anchor Screw

Push-to-install threaded rod support for concrete or brick.

NEW



PAGE 6

## CADDY® ROD LOCK Plywood Form Preset Anchor

Preset anchors for concrete over plywood forms that allow complex prefabricated threaded rod assemblies to be easily pushed into place.

NEW



PAGE 7

## CADDY® ROD LOCK Nut

An innovative nut that you push into place on threaded rod.

NEW



PAGES 8-10

## CADDY® ROD LOCK Duct Brackets

Elegant solutions to facilitate pre-fabrication of rectangular duct.

NEW



PAGE 11

## CADDY® ROD LOCK L-Bracket

Solution for attaching threaded rod assemblies to the side of vertical structures.

NEW



PAGE 12

## CADDY® ROD LOCK Telescoping Strut Replacement

Extremely fast and simple solution for multi-tiered trapeze installations.



PAGE 13

## CADDY® ROD LOCK Channel Nut

Attaches threaded rod to standard strut profiles.



PAGE 14

## SN Series Nut

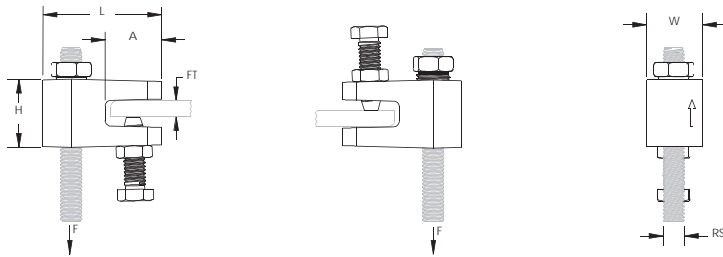
Innovative slotted design allows side mounting of the nut to threaded rod. Ideal for retrofit projects.



# CADDY® ROD LOCK Beam Clamp



- Prefabricated assemblies easily lift and lock into place, helping to save time and money
- Easy “push-to-install” design allows installers to simply push the threaded rod through the mounting hole, instantly holding it in position
- Lock nut can be finger tightened, locking the rod in place
- Works with slightly damaged threads and minor burrs on the threaded rod
- Conforms with Federal Specification WW-H-171 (Type 23), Manufacturers Standardization Society ANSI/MSS-SP-58 (Type 19 and 23)



Material: Cast iron  
Finish: Electro-galvanized



## IMPERIAL

Part Number	Rod Size RS	Flange Thickness FT	Height H	Length L	Width W	A	Static Load 1 F1	Static Load 2 F2
CRLB37EG	3/8"	1/8" – 3/8"	1 3/16"	2.06"	1"	0.98"	250 lb	500 lb

Static Load 1 represents 1/8" to 3/16" (3 mm to 5 mm) flange thickness. Static Load 2 represents 1/4" to 3/8" (6 mm to 10 mm) flange thickness.

For use on plain and electro zinc plated hardware only.

Recognizing that torque wrenches are generally not used or available on many job sites, the setscrew should be tightened so it contacts the I-beam and then an additional 1/2 turn added.



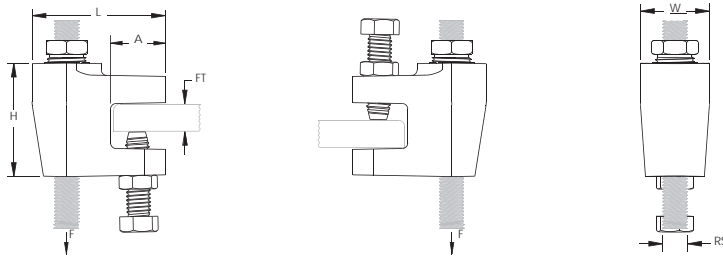
## METRIC

Part Number	Article Number	Rod Size RS	Flange Thickness FT	Height H	Length L	Width W	A	Static Load 1 F1	Static Load 2 F2	Certifications
CRLBM8EG	390001	M8	3 – 10 mm	30 mm	52.3 mm	25.3 mm	24.9 mm	1,100 N	1,400 N	cULus, VdS
CRLBM10EG	390002	M10	3 – 10 mm	30 mm	52.3 mm	25.3 mm	24.9 mm	1,100 N	2,200 N	cULus, FM, VdS

Static Load 1 represents 1/8" to 3/16" (3 mm to 5 mm) flange thickness. Static Load 2 represents 1/4" to 3/8" (6 mm to 10 mm) flange thickness.

For use on plain and electro zinc plated hardware only.

# CADDY® ROD LOCK Beam Clamp, Wide Mouth



- Prefabricated assemblies easily lift and lock into place, helping to save time and money
- Easy “push-to-install” design allows installers to simply push the threaded rod through the mounting hole, instantly holding it in position
- Lock nut can be finger tightened, locking the rod in place
- Works with slightly damaged threads and minor burrs on the threaded rod
- Conforms with Federal Specification WW-H-171 (Type 23), Manufacturers Standardization Society ANSI/MSS-SP-58 (Type 19 and 23)

Material: Cast iron  
Finish: Electro-galvanized



## IMPERIAL

Part Number	Rod Size RS	Flange Thickness FT	Height H	Length L	Width W	A	Static Load F
CRLB50EG	1/2"	3/8" – 3/4"	2.1"	2.4"	1.3"	1"	1,100 lb

FM\* Approved for top mount applications only.

For use on plain and electro zinc plated hardware only.

Recognizing that torque wrenches are generally not used or available on many job sites, the setscrew should be tightened so it contacts the I-beam and then an additional 1/2 turn added.



## METRIC

Part Number	Article Number	Rod Size RS	Flange Thickness FT	Height H	Length L	Width W	A	Static Load F
CRLBM12EG	390023	M12	9.5 – 20.0 mm	54 mm	61.6 mm	33 mm	25.5 mm	4,400 N

FM\* Approved for top mount applications only.

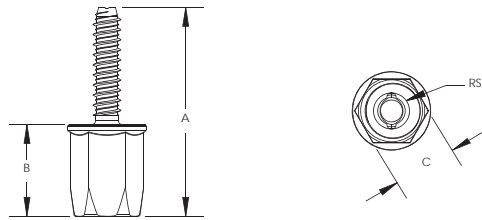
For use on plain and electro zinc plated hardware only.



# CADDY® ROD LOCK Anchor Screw



- For use with concrete and solid brick
- Prefabricated assemblies easily lift and lock into place, helping to save time and money
- Works with slightly damaged threads and minor burrs on the threaded rod



Material: Steel  
Finish: Electro-galvanized



## IMPERIAL

Part Number	Rod Size RS	A	B	C	Drill Bit Size	Drill Hole Depth	Static Load F
CRLA37EG	3/8"	2 7/8"	1 1/4"	7/8"	5/16"	2"	660 lb

For use on plain and electro zinc plated hardware only.  
Tested in 3000 psi (20.67 Mpa) concrete.

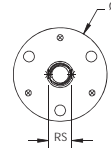
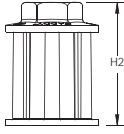
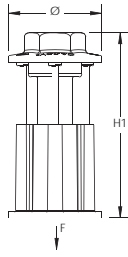


## METRIC

Part Number	Article Number	Rod Size RS	A	B	C	Drill Bit Size	Drill Hole Depth	Static Load F	Certifications
CRLAM8EG	390009	M8	72 mm	32 mm	22 mm	8 mm	50 mm	2,900 N	-
CRLAM10EG	390010	M10	72 mm	32 mm	22 mm	8 mm	50 mm	2,900 N	FM

For use on plain and electro zinc plated hardware only.  
Tested in 3000 psi (20.67 Mpa) concrete.

# CADDY® ROD LOCK Plywood Form Preset Anchor



- Eliminate overhead drilling into building structure – CADDY® ROD LOCK Preset Anchors are cast in place
- Nails hold the anchor in place during the pour and easily break off with a strike of a hammer once the plywood forms are removed
- Easy “push-to-install” design allows installers to simply push the threaded rod through the mounting hole, instantly holding it in position
- Works with slightly damaged threads and minor burrs on the threaded rod
- Prefabricated assemblies easily lift and lock into place, helping to save time and money
- Plastic flange acts as insert locator when the forms are removed
- Suitable for use in seismic zones

Material: Steel

Finish: Electro-galvanized



## IMPERIAL

Part Number	Rod Size RS	Diameter Ø	Height 1 H1	Height 2 H2	Static Load F
CRLW37EG	3/8"	1.65"	3.2"	2.4"	1,407 lb
CRLW50EG	1/2"	1.90"	3.3"	2.5"	1,605 lb

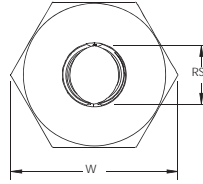
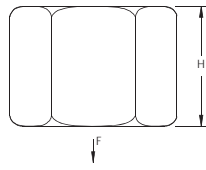


## METRIC

Part Number	Article Number	Rod Size RS	Diameter Ø	Height 1 H1	Height 2 H2	Static Load F
CRLWM10EG	390019	M10	42.0 mm	82.3 mm	61.0 mm	6,300 N
CRLWM12EG	390020	M12	48.3 mm	84.8 mm	63.5 mm	7,200 N



# CADDY® ROD LOCK Nut



- Easy “push-to-install” design allows installers to simply push the threaded rod through the mounting hole, instantly holding it in position
- Fast installation onto long threaded rods – push the nut in place instead of threading it up the rod
- Excellent alignment and easy fine adjustment by spinning the nut
- Extremely useful in tight spaces where wrenches are difficult to use

Material: Steel

Finish: Electro-galvanized

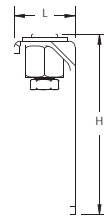
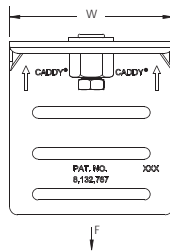
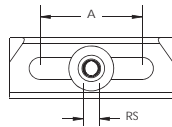
## IMPERIAL

Part Number	Rod Size RS	Height H	Width W	Static Load F
CRLN37EG	3/8"	0.8"	1.1"	1,350 lb

## METRIC

Part Number	Article Number	Rod Size RS	Height H	Width W	Static Load F
CRLNM8EG	390013	M8	20 mm	27.3 mm	4,500 N
CRLNM10EG	390014	M10	20 mm	27.3 mm	6,000 N

# CADDY® ROD LOCK Top-Mount Duct Bracket



- Allows duct to be mounted tight against the ceiling to maximize overhead space and reduce the amount of threaded rod required
- Multiple horizontal mounting slots accommodate insulated duct in tight spaces
- Works with studs in addition to threaded rods for a more aesthetic installation
- Slotted holes in bracket allow for horizontal adjustment of the bracket relative to the duct
- Easy “push-to-install” design allows installers to simply push the threaded rod through the mounting hole, instantly holding it in position
- Ready to use out of the box and eliminates the need for cutting and preparing sections of strut, angle iron, or strap
- Integrated adjustment nut enables fine tuning the system height up or down
- Lock nut can be finger tightened, locking the rod in place
- Ideal for modular assembly – allows attachment of brackets to sections of duct while safely on the ground
- Extremely useful in tight spaces where wrenches are difficult to use
- Includes self-tapping sheet metal screws to attach bracket to duct

Material: Steel

Finish: Electro-galvanized

## IMPERIAL



Part Number	Rod Size RS	Height H	Length L	Width W	A	Static Load F
CRLD37TEG	3/8"	4.4"	1 1/2"	4"	2 1/2"	650 lb

## METRIC

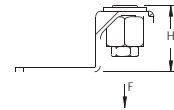
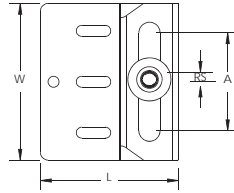


Part Number	Article Number	Rod Size RS	Height H	Length L	Width W	A	Static Load F
CRLDM8TEG	390017	M8	112 mm	37.8 mm	101.6 mm	63.5 mm	2,900 N
CRLDM10TEG	390018	M10	112 mm	37.8 mm	101.6 mm	63.5 mm	2,900 N





# CADDY® ROD LOCK Bottom-Mount Duct Bracket



- Ideal for modular assembly – allows attachment of brackets to sections of duct while safely on the ground
- Slotted holes in bracket allow for horizontal adjustment of the bracket relative to the duct
- Easy “push-to-install” design allows installers to simply push the threaded rod through the mounting hole, instantly holding it in position
- Ready to use out of the box and eliminates the need for cutting and preparing sections of strut, angle iron, or strap
- Integrated adjustment nut enables fine tuning the system height up or down
- Lock nut can be finger tightened, locking the rod in place
- Extremely useful in tight spaces where wrenches are difficult to use
- Includes self-tapping sheet metal screws to attach bracket to duct

Material: Steel

Finish: Electro-galvanized



## IMPERIAL

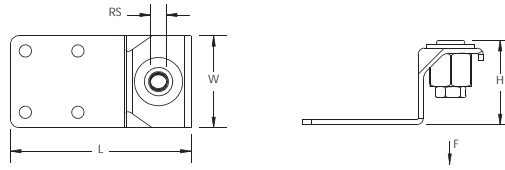
Part Number	Rod Size RS	Height H	Length L	Width W	A	Static Load F
CRLD37BEG	3/8"	1.7"	3 1/2"	4"	2 1/2"	650 lb



## METRIC

Part Number	Article Number	Rod Size RS	Height H	Length L	Width W	A	Static Load F
CRLDM8BEG	390015	M8	44 mm	89.5 mm	101.6 mm	63.5 mm	2,900 N
CRLDM10BEG	390016	M10	44 mm	89.5 mm	101.6 mm	63.5 mm	2,900 N

# CADDY® ROD LOCK Bottom-Mount Duct Bracket, Narrow



- Ideal for modular assembly – allows attachment of brackets to sections of duct while safely on the ground
- Non-slotted bracket allows for attachment after the final horizontal position of the duct is achieved
- Easy “push-to-install” design allows installers to simply push the threaded rod through the mounting hole, instantly holding it in position
- Ready to use out of the box and eliminates the need for cutting and preparing sections of strut, angle iron, or strap
- Integrated adjustment nut enables fine tuning the system height up or down
- Lock nut can be finger tightened, locking the rod in place
- Extremely useful in tight spaces where wrenches are difficult to use
- Includes self-tapping sheet metal screws to attach bracket to duct

Material: Steel

Finish: Electro-galvanized



## IMPERIAL

Part Number	Rod Size RS	Height H	Length L	Width W	Static Load F
CRLD37BNEG	3/8"	1.9"	4.1"	2.1"	1,400 lb

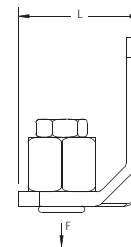
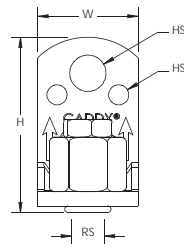
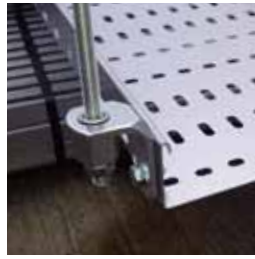


## METRIC

Part Number	Article Number	Rod Size RS	Height H	Length L	Width W	Static Load F
CRLDM8BNEG	390024	M8	48.8 mm	104.8 mm	53.3 mm	2,900 N
CRLDM10BNEG	390025	M10	48.8 mm	104.8 mm	53.3 mm	6,200 N



# CADDY® ROD LOCK L-Bracket



- Easy “push-to-install” design allows installers to simply push the threaded rod through the mounting hole, instantly holding it in position
- Prefabricated assemblies easily lift and lock into place, helping to save time and money
- Multiple attachment holes support the use of either self-drilling screws or bolts, offering installation options for concrete, wood, and steel structures
- Lock nut can be finger tightened, locking the rod in place
- Integrated adjustment nut enables fine tuning the system height up or down
- Extremely useful in tight spaces where wrenches are difficult to use
- Conforms with Federal Specification WW-H-171 (Type 23), Manufacturers Standardization Society ANSI/MSS-SP-58 (Type 19 and 23)

Material: Steel

Finish: Electro-galvanized



## IMPERIAL

Part Number	Rod Size RS	Height H	Length L	Width W	Hole Size 1 HS1	Hole Size 2 HS2	Wrench Size	Static Load F
CRL37EG	3/8"	2 1/2"	1.7"	1.4"	0.51"	0.28"	11/16"	700 lb

Follow fastener manufacturer's recommended shear and pull-out strength when fastening to the structure. Fastener not included. Install in accordance with applicable code.



## METRIC

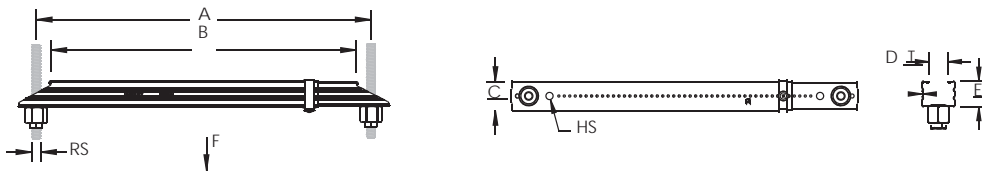
Part Number	Article Number	Rod Size RS	Height H	Length L	Width W	Hole Size 1 HS1	Hole Size 2 HS2	Wrench Size	Static Load F	Certifications
CRLM8EG	390011	M8	62.1 mm	43.2 mm	35.6 mm	10.4 mm	7.1 mm	24 mm	2,200 N	VdS
CRLM10EG	390012	M10	62.1 mm	43.2 mm	35.6 mm	10.4 mm	7.1 mm	24 mm	3,100 N	cULus, FM, VdS

Follow fastener manufacturer's recommended shear and pull-out strength when fastening to the structure. Fastener not included. Install in accordance with applicable code.

# CADDY® ROD LOCK Telescoping Strut Replacement



- Easy “push-to-install” design allows installers to simply push the threaded rod through the mounting hole, instantly holding it in position
- Ready to use out of the box and eliminates the need for cutting sections of strut
- Telescopes to the desired length and then pushes onto the threaded rod
- Integrated adjustment nut enables fine tuning the system height up or down
- Lock nut can be finger tightened, locking the rod in place
- Allows for the quick creation, installation, and adjustment of multi-level trapeze assemblies
- Supports up to four 2” (50 DN) conduits or four 2” (50 DN) water filled pipes at 10’ (3 m) spacing
- Works with the KBT Wire Basket Tray Clip for securing wire basket cable tray
- Works with SCH Single-Piece Strut Clamps



Material: Steel  
Finish: Pre-galvanized

## IMPERIAL

Part Number	Rod Size RS	Hole Size HS	Thickness T	A	B	C	D	E	Static Load F
TSR20038RL	3/8"	1/4"	0.04"	12.6" – 20.0"	11.40" – 18.75"	1.4"	0.81"	1.12"	200 lb

## METRIC

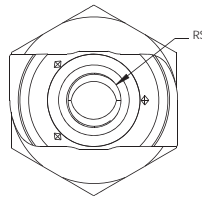
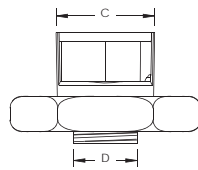
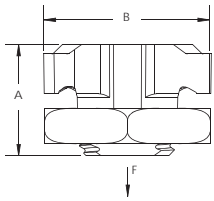
Part Number	Article Number	Rod Size RS	Hole Size HS	Thickness T	A	B	C	D	E	Static Load F
TSR200M8RL	360503	M8	6.4 mm	1 mm	320 – 508 mm	288.5 – 476.0 mm	35.6 mm	20.6 mm	28.4 mm	890 N
TSR200M10RL	360504	M10	6.4 mm	1 mm	320 – 508 mm	288.5 – 476.0 mm	35.6 mm	20.6 mm	28.4 mm	890 N



# CADDY® ROD LOCK Channel Nut



- Provides fast universal attachment of threaded rod and hardware to standard strut profiles
- Can be used to prefabricate assemblies which can be quickly pushed onto previously installed threaded rods
- Works with slightly damaged threads and minor burrs on the threaded rod



Material: Cast iron  
Finish: Electro-galvanized

## IMPERIAL

Part Number	Rod Size RS	A	B	C	D	Static Load F
CRLS37EG	3/8"	0.91"	1.4"	0.769"	0.53"	750 lb

For use on plain and electro zinc plated hardware only.

## METRIC

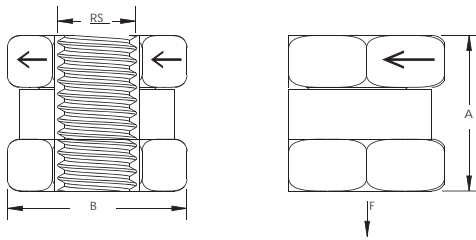
Part Number	Article Number	Rod Size RS	A	B	C	D	Static Load F
CRLSM8EG	390003	M8	23 mm	35 mm	19.5 mm	13.5 mm	2,750 N
CRLSM10EG	390004	M10	23 mm	35 mm	19.5 mm	13.5 mm	3,750 N

For use on plain and electro zinc plated hardware only.

# SN Series Nut



- Allows side mounting of nut to threaded rod
- Reduces the need for threading compared to standard nuts and washers
- Ideal for retrofit projects, such as trapeze installations
- Works with slightly damaged threads and minor burrs on the threaded rod
- Reduces installation time up to 50%



Material: Steel  
Finish: Electro-galvanized

## IMPERIAL

Part Number	Rod Size RS	A	B	Static Load F
SN25	1/4"	3/4"	7/8"	500 lb
SN37	3/8"	3/4"	7/8"	1,350 lb
SN50	1/2"	3/4"	7/8"	2,250 lb

For use on plain and electro zinc plated hardware only.

## METRIC

Part Number	Article Number	Rod Size RS	A	B	Static Load F
SNM6	390005	M6	19 mm	22 mm	1,650 N
SNM8	390006	M8	19 mm	22 mm	4,500 N
SNM10	390007	M10	19 mm	22 mm	6,000 N
SNM12	390008	M12	19 mm	22 mm	10,000 N

For use on plain and electro zinc plated hardware only.



ANSI is a registered trademark of American National Standards Institute. FM is a registered certification mark of FM Approvals LLC, LTD. UL, UR, cUL, cUR, cULus and cURus are registered certification marks of UL LLC.

#### WARNING

ERICO products shall be installed and used only as indicated in ERICO's product instruction sheets and training materials. Instruction sheets are available at [www.erico.com](http://www.erico.com) and from your ERICO customer service representative. Improper installation, misuse, misapplication or other failure to completely follow ERICO's instructions and warnings may cause product malfunction, property damage, serious bodily injury and death.

#### WARRANTY

ERICO products are warranted to be free from defects in material and workmanship at the time of shipment. NO OTHER WARRANTY, WHETHER EXPRESS OR IMPLIED (INCLUDING ANY WARRANTY OF MERCHANTABILITY OR FITNESS FOR A PARTICULAR PURPOSE), SHALL EXIST IN CONNECTION WITH THE SALE OR USE OF ANY ERICO PRODUCTS. Claims for errors, shortages, defects or nonconformities ascertainable upon inspection must be made in writing within 5 days after Buyer's receipt of products. All other claims must be made in writing to ERICO within 6 months from the date of shipment or transport. Products claimed to be nonconforming or defective must, upon ERICO's prior written approval in accordance with its standard terms and procedures governing returns, promptly be returned to ERICO for inspection. Claims not made as provided above and within the applicable time period will be barred. ERICO shall in no event be responsible if the products have not been stored or used in accordance with its specifications and recommended procedures. ERICO will, at its option, either repair or replace nonconforming or defective products for which it is responsible or return the purchase price to the Buyer. THE FOREGOING STATES BUYER'S EXCLUSIVE REMEDY FOR ANY BREACH OF ERICO WARRANTY AND FOR ANY CLAIM, WHETHER SOUNDING IN CONTRACT, TORT OR NEGLIGENCE, FOR LOSS OR INJURY CAUSED BY THE SALE OR USE OF ANY PRODUCT.

#### LIMITATION OF LIABILITY

ERICO excludes all liability except such liability that is directly attributable to the willful or gross negligence of ERICO's employees. Should ERICO be held liable its liability shall in no event exceed the total purchase price under the contract. ERICO SHALL IN NO EVENT BE RESPONSIBLE FOR ANY LOSS OF BUSINESS OR PROFITS, DOWNTIME OR DELAY, LABOR, REPAIR OR MATERIAL COSTS OR ANY SIMILAR OR DISSIMILAR CONSEQUENTIAL LOSS OR DAMAGE INCURRED BY BUYER.

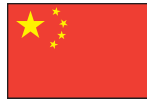
# ERICO®



[www.erico.com](http://www.erico.com)



**AUSTRALIA**  
Phone 1-800-263-508  
Fax 1-800-423-091



**CHINA**  
Phone +86-21-3430-4878  
Fax +86-21-5831-8177



**HUNGARY**  
Phone 06-800-16538  
Fax +39-0244-386-107



**NORWAY**  
Phone 800-100-73  
Fax 800-100-66



**SWITZERLAND**  
Phone 0800-55-86-97  
Fax 0800-55-96-15



**BELGIUM**  
Phone 0800-757-48  
Fax 0800-757-60



**DENMARK**  
Phone 808-89-372  
Fax 808-89-373



**INDONESIA**  
Phone +62-21-575-0941  
Fax +62-21-575-0942



**POLAND**  
Phone +48-71-349-04-60  
Fax +48-71-349-04-61



**THAILAND**  
Phone +66-2-267-5776  
Fax +66-2-636-6988



**BRAZIL**  
Phone +55-11-3623-4333  
Fax +55-11-3621-4066



**FRANCE**  
Phone 0-800-901-793  
Fax 0-800-902-024



**ITALY**  
Phone 800-870-938  
Fax 800-873-935



**SINGAPORE**  
Phone +65-6-268-3433  
Fax +65-6-268-1389



**UNITED ARAB  
EMIRATES**  
Phone +971-4-881-7250  
Fax +971-4-881-7270



**CANADA**  
Phone +1-800-677-9089  
Fax +1-800-677-8131



**GERMANY**  
Phone 0-800-189-0272  
Fax 0-800-189-0274



**MEXICO**  
Phone +52-55-5260-5991  
Fax +52-55-5260-3310



**SPAIN**  
Phone 900-993-154  
Fax 900-807-333



**UNITED KINGDOM**  
Phone 0808-2344-670  
Fax 0808-2344-676



**CHILE**  
Phone +56-2-370-2908  
Fax +56-2-369-5657



**HONG KONG**  
Phone +852-2764-8808  
Fax +852-2764-4486



**NETHERLANDS**  
Phone 0800-0200-135  
Fax 0800-0200-136



**SWEDEN**  
Phone 020-790-908  
Fax 020-798-964



**UNITED STATES**  
Phone 1-800-753-9221  
Fax +1-440-248-0723